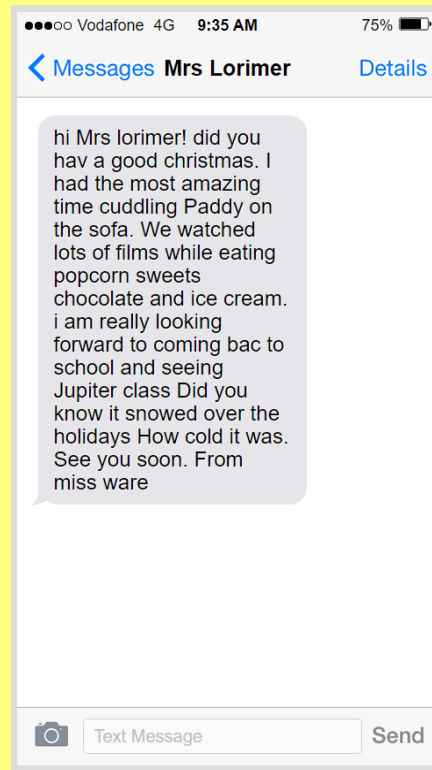


Learning intentions	SPAG-Spelling / Starter	Input/discussion	Main activity/challenges	Plenary-mid/end
---------------------	-------------------------	------------------	--------------------------	-----------------

<p><b>WALT: use punctuation</b> <b>Context: full stops and capital letters</b></p>	<p>Refresh knowledge on types of punctuation. Can you show the arm movements for it?</p>	<p>Show text message from Miss Ware. As a class can you spot the punctuation mistakes? Work through as a class. Showing little red riding hood pictures; ask the class on whiteboards to write a sentence for them with capital letters and full stops. In groups work through 'dinosaur on tour' sheet correcting mistakes with purple pens.</p>	<p>Re-write the sentences on the sheet to include capital letters, question marks and full stops</p>	<p>Punctuation spinner on pwp.</p>
--	--	---	--	------------------------------------

What types of punctuation do we know?

Miss Ware has  
been a little lazy  
and has forgotten  
her punctuation.  
Can you spot her  
mistakes?



Can you write a sentence underneath each picture in the comic strip, using a **full stop**, to describe what is happening?



Can you write a sentence underneath each picture in the comic strip, using a **full stop**, to describe what is happening?



Little Red Riding Hood was going to see her grandma.



She met a wolf in the woods.



She thought Grandma looked very strange.



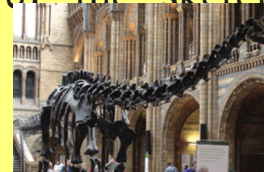
A woodcutter arrived and scared the wolf away.

## dINOSAUR ON TOUR!

have you ever visited London. then you might have seen one of the biggest and most popular members of the Natural History Museum

dippy, the enormous diplodocus skeleton, has been at the museum since 1905. now some other museums are going to have a turn to look after him.

the real diplodocus skeleton was found in America in 1898 and put on display there. King Edward VII saw a drawing of it and he asked to have a model of the skeleton built for the Natural History Museum.



In your learning partners use your purple pens to correct the punctuation mistakes.

Context: Capital letters, full stops and question marks.

Write the correct sentence underneath by adding in capital letters, full stops and question marks.

1. my brother's dog is called tess

---

2. on sunday she went to the park

---

3. toby and mark are going to spain in march

---


4. when i go to the shop i will get some crisps

---

5. did you sell buns at the fair

---



 1) Punctuation plenary spinner.ppt

## Attachments

---

1) Punctuation plenary spinner.ppt