

## *The Spanish Armada 1588*

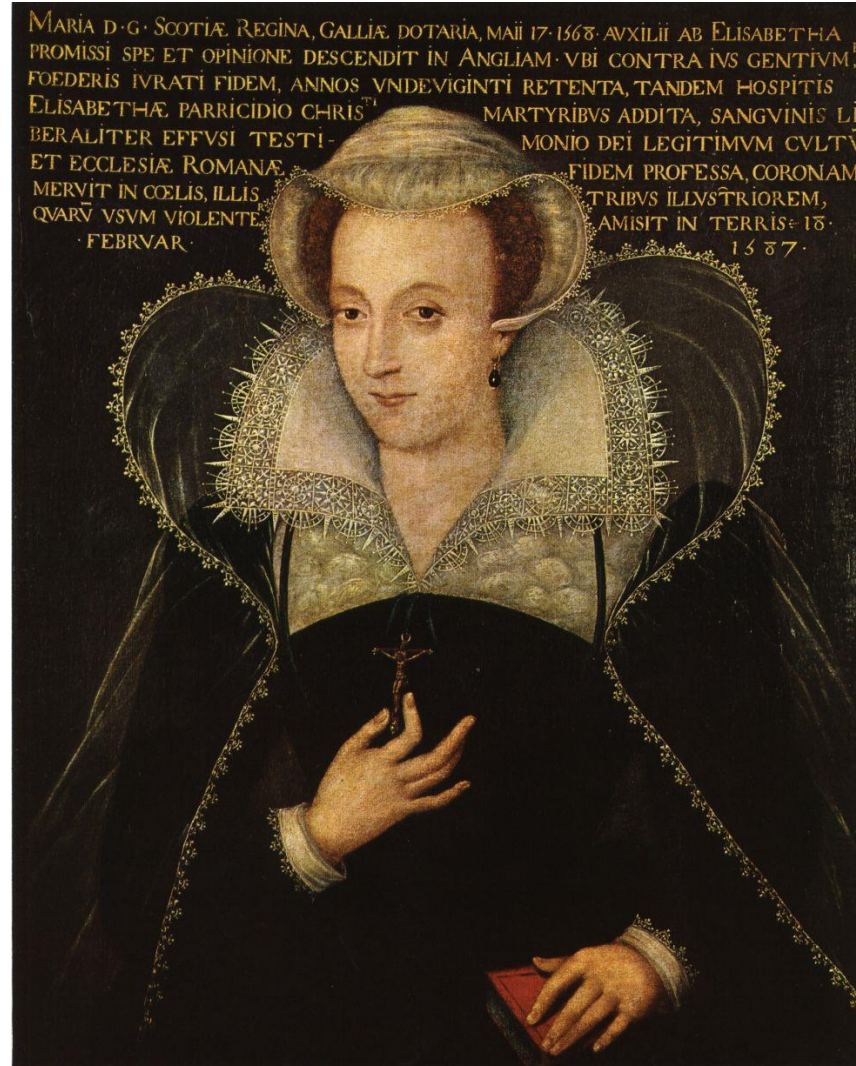
*Why did the Spanish Armada try to invade England?*



What can you remember from the last lesson?  
Who do you think this is?  
Here are some clues.

Married to the  
French  
Dauphin –the  
heir to the  
French throne

So what  
religion  
would she be?

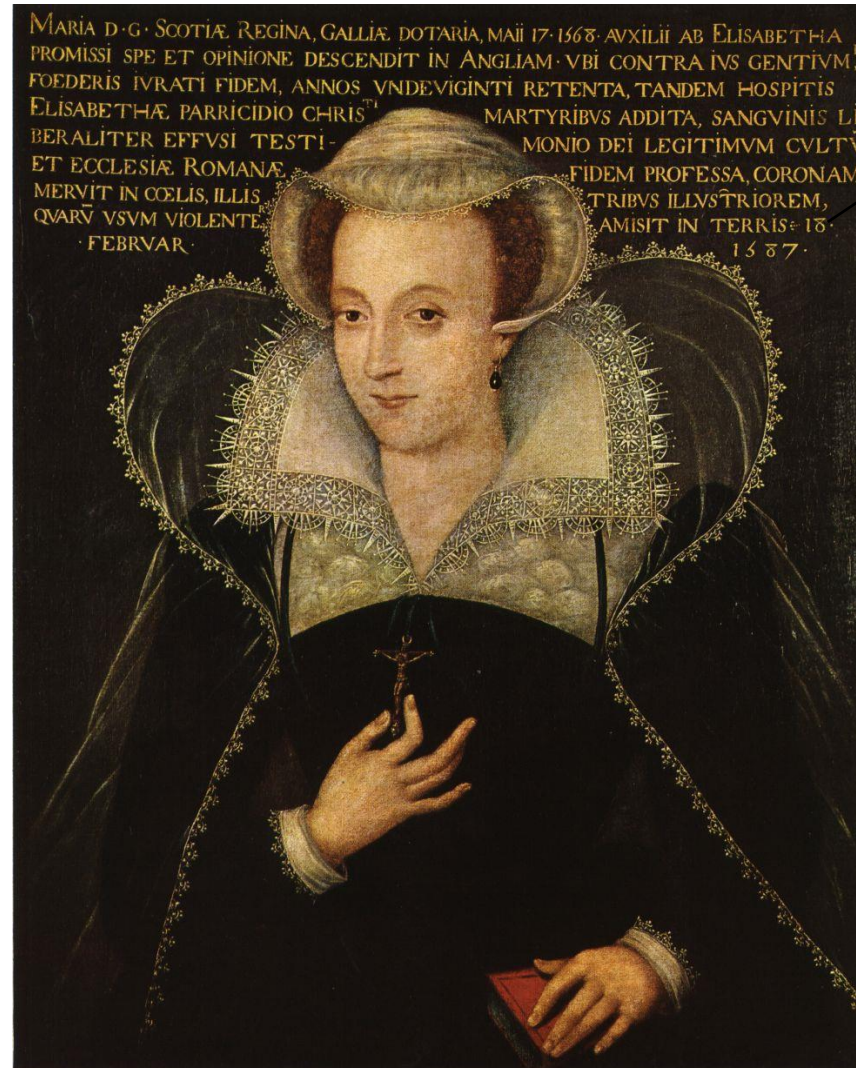


Granddaughter of  
Margaret Tudor,  
Henry VIII sister

What relationship  
does she have to  
Elizabeth I?

Annotate your image to show what you remember. I have started for you.

*Of course,  
it's Mary  
Queen of  
Scots.*



She was Elizabeth's cousin.

She was a Catholic.



Let's  
find out  
more  
about  
the  
Spanish  
Armada.

Ever since the break with Rome, England had been under threat of invasion from the Catholic countries of Europe. Spain was the most powerful Catholic country at this time and Phillip II needed very little excuse to invade England.

Phillip II



# Who was involved?

On the red team we have...



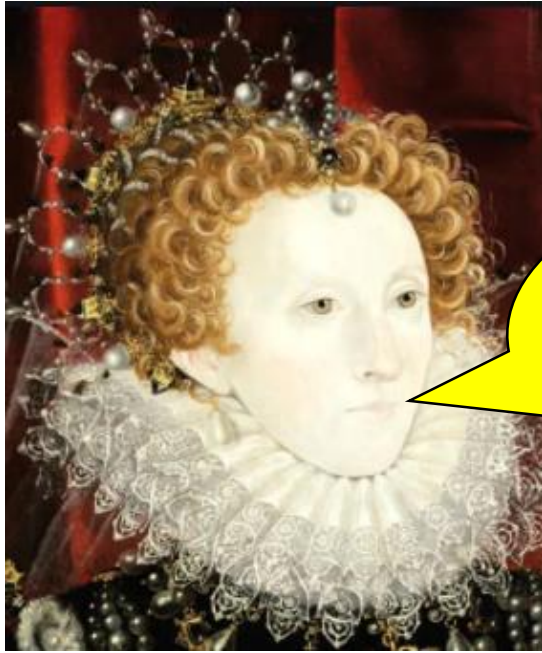
I am the Duke of Medina Sidonia. I am in charge of the Armada even though I know nothing about ships and sailing!

I am King Phillip II of Spain. I am fed up with Elizabeth of England!



I am the Duke of Parma. I'm in charge of the Spanish soldiers in the Netherlands.

On the blue team  
we have...



I am Elizabeth  
I the Queen of  
England.



I am Lord  
Howard of  
Effingham. I  
am the Admiral  
of the Navy. I  
have overall  
command of  
the English  
fleet.



I am Sir  
Francis Drake  
the Vice  
Admiral in  
command of  
the English  
fleet.

Think, pair, share

Have you ever heard  
of the Spanish  
Armada?

Do you know what an  
armada is?



What was the Armada?

The word Armada means  
greatest navy!

In May 1588 a massive  
invasion fleet or 'Armada' sailed  
from the port of Lisbon. It was made  
up of 130 ships fitted with 2,500  
guns.

The Armada is famous because at  
that time England was a small  
nation with a little navy and they  
were facing the greatest power in  
the world (Spain).



Watch the video to find out why Phillip wanted to invade England.

<https://www.youtube.com/watch?v=GM1n2DBq2gQ>



Think, pair, share

Why did Phillip II of Spain decide to invade England?



Elizabeth's navy had inflicted acts of piracy on his ships, (attacking and stealing gold from them).

Elizabeth helped the people in the Netherlands, who were rebelling against Phillip II.

He had a personal grudge against Elizabeth. Remember he had been married to her sister Mary. When Mary died, he asked Elizabeth to marry him but she refused.

The turning point came when Mary Queen of Scots was executed. This was the final straw!

<https://www.youtube.com/watch?v=Xbgmw1lch3Y>

*Let's find  
out what  
happened*



# The Spanish Armada

▶ ⏪ 🔊 0:02 / 3:14



What happened during the Spanish Armada?

Elizabeth knew that the Spanish would send an armada. England prepared for the Spanish Armada for two years.



In 1587 Sir Francis Drake destroyed 20-30 ships at the port of Cadiz and also supplies intended for the Armada. This delayed the Spanish Armada.

Sir Francis  
Drake





In July 1588 the Spanish fleet under the Duke of Medina Sidonia sailed from Spain. The Armada's aim was to invade England.

The Duke of Medina Sidonia

When Spanish ships were sighted at Lands End in July 1588, the English lit fire beacons to pass a warning of the Armada's arrival up the coast.





On 6th August the Spanish fleet anchored at Calais where they hoped to pick up fresh supplies and ammunition. However, the Spanish army had been prevented from leaving the Netherlands by the English and Dutch. This meant that the rendezvous between the Spanish army and navy could not take place.



The English unleashed fire ships against the Spanish in order to scatter their fleet. Eight ships were packed with ammunition, deliberately set alight and directed towards the Spanish lines where they exploded like floating bombs. This forced the Spanish to break formation and run into the line of English gun fire.



Spanish attempts to regroup were hindered by the bad weather which nearly caused the fleet to be grounded on the sandbanks near the port of Gravelines. The Battle of Gravelines led to the loss of five Spanish ships but many others were badly damaged.





Bad weather and English tactics caused the Armada to sail into the North Sea. This meant that the only way to return to Spain was to sail around the British Isles. The Spanish were ill prepared to do so, lacking maps and running low on food and water. Terrible storms during the autumn of 1588 resulted in the loss of a further 34 or 35 ships.

Approximately, half of the Spanish fleet was lost. Nearly 20,000 sailors lost their lives, mainly to disease and starvation.



Your task is to draw  
an Armada ship.

You can follow the  
step by step guide or  
have a go yourself.

<https://www.youtube.com/watch?v=WUzQRmAMohM>





## Plenary

Look carefully at this picture of Elizabeth I

It is called 'The Armada portrait'. Can you work out why? There are lots of symbols in this picture. Can you find them?





The view out of this window shows the sea battle.



The crown shows how important Elizabeth is.



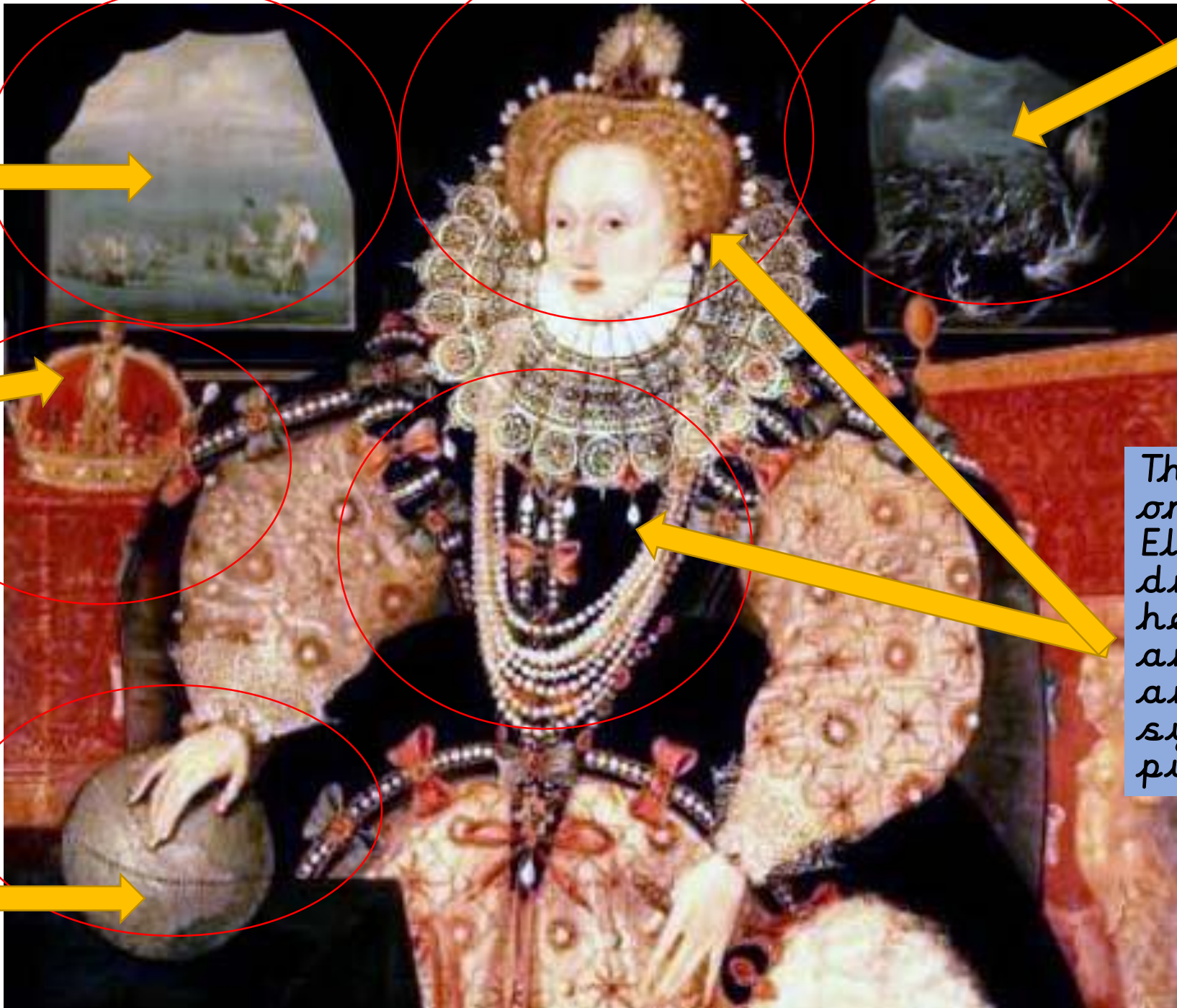
The view out of this window shows the Armada being destroyed by the storm.



The pearls on Elizabeth's dress, in her hair and around are neck are symbols of purity.



The globe shows Elizabeth's power over the world especially the New World, (the Americas).





*Listen to Thomas' account of what happened during the Spanish Armada. Does anything surprise you?*

<https://www.bbc.co.uk/teach/school-radio/history-tudors-the-spanish-armada/zbtxjhv>

